



Archer Electrical

CASE STUDY/ RETAIL/ 084 NOV 2019

CLIENT: H&M - Weekday & Monki
 LOCATION: Grosvenor House, Sheffield
 DESCRIPTION: Full Electrical Installation
 DATE: November 2019

H&M Group Weekday & Monki completely new brand concepts were completed within Grosvenor House, Sheffield as part of H&M’s umbrella of stores; Cos, Monki, Weekday and It’s Pleat Café.

These stores stand side by side and showcase Monki & Weekday’s range of playful designs with a youthful irreverence offering Sheffield City shoppers with more variety and choice.

“Sheffield is a city full of young, creative people and we can’t wait to open our first store there and share the full Monki experience,” said Jennie Dahlin Hansson, managing director of Monki.

Commencing from bare shell units we worked in unison with the Principle Contractor Powell’s Group for the project s to be completed to an exceptional standard, on time and within budget.

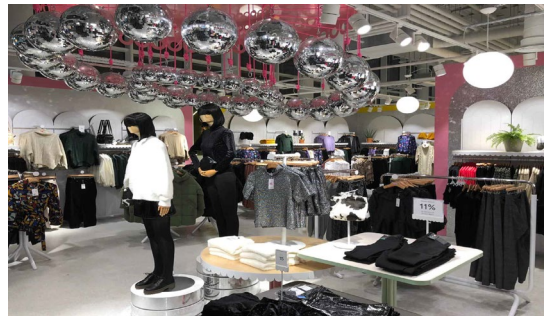
Testimonial:

What the client said:

“Today was the big Monki Sheffield store opening. There was a massive queue, we even had to restrict people coming in because there were so many people!! Just wanted to say a big thanks to everyone who worked on the project, Monki loved it and it looked AMAZING! Was a joy to work with you all!

Lucy Field

Project Manager - H&M Hennes & Mauritz



WEEKDAY

MONKI